

CING

2002 SUBARU IMPREZA WRX



SUPERIOR CONTROL MEANS CONFIDENCE IN ANY DRIVING
SITUATION. THAT'S WHY EVERY SUBARU HAS AN ADVANCED
FULL-TIME ALL-WHEEL DRIVING SYSTEM FOR MAXIMUM TRACTION
AND A COMFORTABLE, WELL-THOUGHT INTERIOR WITH EASY
TO OPERATE CONTROLS. EXPANSIVE WINDOWS AND GENEROUS
MIRRORS GIVE SUPERIOR VISIBILITY. A CLEAN, AERO-
DYNAMIC EXTERIOR ADDS STABILITY. A CAR IN CONTROL IS
A SAFER CAR. IT'S A LESSON WE'VE LEARNED ON THE
WORLD'S MOST CHALLENGING ROADS IN SOME OF THE WORST
CONDITIONS IMAGINABLE. IT'S THE SIMPLE TRUTH BEHIND THE
SUBARU PHILOSOPHY OF ACTIVE DRIVING, ACTIVE SAFETY.

2002 Subaru Impreza



TABLE OF CONTENTS

02 ENGINE

04 ALL-WHEEL DRIVING SYSTEM

06 IMPREZA WRX SEDAN

WRX

08 IMPREZA WRX SPORT WAGON

10 SAFETY & SECURITY

12 SPECIFICATIONS/COLORS & FABRIC

12 ACCOLADES

A casual glance will not reveal the soul of the WRX. It was not designed by some stylist to elicit a response that says look at me, I'm a supercar. It was designed by engineers to win in the most brutal arena of motorsports, the World Rally Championship. The rally version succeeded, winning three years in a row. What worked there is what you see here: an enormously powerful sports sedan that provides world class performance with the control and comfort found in every Subaru. It's as easy to drive around the block as it is at its very limits: **the ultimate sports sedan anyone can drive.**

Impreza WRX

SUBARU 

The Beauty of All-Wheel Drive.



"AS SOON AS THE 2.0-LITRE TURBO GETS INTO FULL SWING, EVERYTHING INSIDE THE WRX GETS COMPRESSED DEEP INTO WHATEVER'S BEHIND IT."

CAR MAGAZINE, OCTOBER 2000.

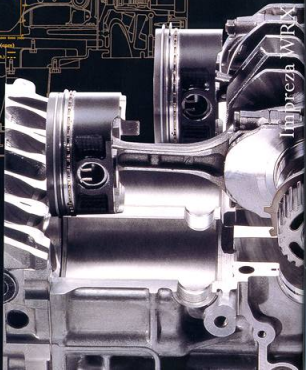
The secret to the WRX's performance is outstanding low and mid-range torque, for a smooth, uninterrupted flow of power.



The WRX features a smooth-shifting 5-speed manual transmission. The electronically controlled 4-speed automatic has a gated design that makes it easy to select the right gear and works with the standard Variable Torque Distribution (VTD) AWD system to balance power to the front and rear wheels.

You'll find a horizontally opposed engine in every Subaru. Its compact size and lower center of gravity make it easy to place optimally in the chassis for balanced handling. Low height means a low hood line for enhanced visibility. And high rigidity and nearly vibration-free performance make it the perfect choice for a sports sedan. You'll find this type of engine from one other manufacturer - Porsche.

The difference is: while we've remained true to this layout, they tried V8 and in-line four cylinder designs as well. But now, every Porsche has a boxer engine like ours.



Impreza WRX Engine

YOU MIGHT EXPECT A RACE-DERIVED ENGINE TO BE A PEAKY, HARD-TO-CONTROL MONSTER. NOTHING COULD BE FURTHER FROM THE TRUTH. RALLYING DEMANDS AN ENGINE THAT CAN PROVIDE POWER THROUGHOUT THE RPM BAND AND DELIVER IT IN A LINEAR, PREDICTABLE MANNER. AS IMPRESSIVE AS 227 HORSEPOWER IS, THE FACT THAT THE WRX ENGINE MAKES ITS MAXIMUM TORQUE AT ONLY 4,000 RPM MEANS POWER IS ON TAP AT ALL TIMES. BUT AS POWERFUL AS THE WRX ENGINE IS, IT'S ALSO CLEAN. DESIGNED TO MEET GLOBAL EMISSIONS STANDARDS, THE ENGINE BURNS SO CLEANLY THAT THE WRX ALSO QUALIFIES AS A LOW EMISSION VEHICLE (LEV) IN THE U.S.

MEAN AND CLEAN

Located directly above the fuel injectors, the Tumble Generator Valves (TGV) increase the swirl of the air/fuel mixture at idle, reducing emissions.



x1000r/min

For maximum power from the smallest package, the WRX uses advanced technology including lightweight aluminum-alloy construction, dual overhead camshafts for precise valvetrain control, and 4 valves per cylinder for optimum intake and exhaust flow. Direct ignition provides accurate and consistent spark, eliminating the need for a distributor.



An intercooler cools the air coming into the engine, allowing the turbocharger to produce a maximum boost of 13.5 PSI. An auxiliary oil cooler helps the engine be as durable as it is powerful.

IMPRESA

"...THE WRX IS A DEVASTATINGLY QUICK, SURE-FOOTED MACHINE WITH A CHASSIS RIGHT OUT OF SPORT-SEDAN HEAVEN."

AUTOMOBILE MAGAZINE, DECEMBER 2000

WHAT "TRACTION CONTROL" WANTS TO BE WHEN IT GROWS UP.

Four little patches of tire between you and the road. Why not use them all? The Subaru All-Wheel Driving System constantly monitors and smoothly adjusts power to provide the best traction in any weather. For ultimate control, the system drives all four wheels all the time, unlike some AWD systems that drive only two wheels until they detect a loss of traction and then respond,

To further exploit the power of its engine, the WRX features a standard limited-slip rear differential that distributes power between the rear wheels for maximum traction and control. WRX models equipped with the 4-speed automatic transmission feature a Variable Torque Distribution (VTD) AWD System to ensure the most effective distribution of power for sporty handling.



The 4-wheel, fully-independent suspension has been tried and proven on the WRC rally car.

In fact, MacPherson struts use L-shaped lower arms for added rigidity and durability. Liquid-filled suspension bushings absorb unwanted vibration.



The rear Dual-link suspension in the WRX is designed for exceptional stability - a must for a vehicle with this potential for speed. Front and rear stabilizer bars help keep body roll in check.



When braking, the vehicle's weight shifts forward, reducing rear-wheel traction. Subaru AWD can respond by sending power to the front wheels for better overall steering control and braking performance.

When accelerating, the vehicle's weight shifts rearward, reducing traction to the front wheels. In response, Subaru AWD can smoothly direct power to the rear wheels where there is more traction.

All-Wheel Driving System

THE HEART OF EVERY SUBARU IS THE SYMMETRICAL AWD SYSTEM. THE ENGINE, TRANSMISSION, DRIVESHAFT AND REAR DIFFERENTIAL ARE LAID OUT IN A STRAIGHT LINE IN THE CENTER OF THE BODY. BY CLOSELY BALANCING THE BODY LEFT TO RIGHT, AND KEEPING COMPONENTS CLOSE TO THE CHASSIS CENTERLINE, THE WRX IS EXCEPTIONALLY AGILE, YET EXTREMELY STABLE. THE BOXER ENGINE'S COMPACT DIMENSIONS ALLOW IT TO BE PLACED FURTHER BACK IN THE CHASSIS, REDUCING WEIGHT AHEAD OF THE FRONT WHEELS, ALLOWING MUCH QUICKER REACTION TO STEERING INPUTS. THE REAR DIFFERENTIAL HELPS TO BALANCE THE CHASSIS' WEIGHT FRONT TO REAR.



Subaru AWD has conquered the unique demands of rallying, where a vehicle must be extremely responsive and maneuverable, yet completely stable and predictable.



Going into a corner, rear-wheel drive cars tend to oversteer. The rear wheels can break loose, sending the car into a spin. Subaru AWD tracks smoothly through the curve, entering with the right amount of power to the front wheels.

Coming out of a corner, a front-wheel drive car tends to understeer, or plow toward the outside of a curve when accelerating. With AWD, the Subaru Impreza exits a curve with the right amount of power to the rear wheels.

When going uphill, the vehicle's weight shifts rearward, reducing traction to the front wheels. In response, Subaru AWD can smoothly direct power to the rear wheels where there is more traction.

When going downhill, the vehicle's weight shifts forward, reducing rear-wheel traction. Subaru AWD can respond by sending power to the front wheels for better overall steering control and braking performance.

"A LOW-MOUNTED FLAT-FOUR ENGINE, LONGITUDINAL TRANSMISSION, STRUT SUSPENSION AT EACH CORNER AND FOUR WHEEL DRIVE IS PURIST ENGINEERING."

CAR MAGAZINE, OCTOBER 2000

RACE PROVEN, NOT "INSPIRED".



Large taillights wrap around for added visibility. The available rear spoiler adds downforce at speed. And chrome dual exhaust tips add a finishing touch.

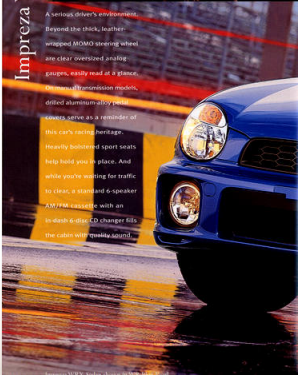
Some manufacturers seem to think that all you need to do is take a family car, add big wheels, fat tires, a spoiler and maybe some fancy graphics, and you have a sports sedan. Oh, and don't forget a chrome muffler the size of a coffee can—that's in right now. Because looking sporty is what it's all about, right? We beg to disagree.

Designed, tested and proven in its rally form, in the world's most brutal form of motorsport, what you see isn't exterior styling. It's armor that's been proven in battle. The fact that the WRX is so ruggedly handsome is just a coincidence.

Impreza WRX Sedan



A serious driver's environment. Beyond the thick, leather-wrapped MOMO steering wheel are clear oversized analog gauges, easily read at a glance. Downshift transmission models, drilled aluminum-alloy pedal covers serve as a reminder of this car's racing heritage. Heavily bolstered sport seats help hold you in place. And while you're waiting for traffic to clear, a standard 6-speaker AM/FM cassette with an in-dash 6-disc CD changer fills the cabin with quality sound.



THE WRX LOOKS LIKE IT DOES BECAUSE THAT'S WHAT IT TAKES TO WIN. MULTI-REFLECTOR HALOGEN HEADLAMPS AND LARGE DIAMETER FOG LIGHTS OFFER SUPERIOR ILLUMINATION. THE FUNCTIONAL HOOD SCOOP SENDS COOL AIR DIRECTLY TO THE INTERCOOLER. THE LARGE INTAKE IN THE FRONT AIR DAM HELPS COOL THE ENGINE. THE SMALL VENTS NEXT TO THE FOG LIGHTS SEND COOLING AIR TO THE BRAKES. THE HOOD IS ALUMINUM-ALLOY TO REDUCE WEIGHT. SIDE GROUND EFFECTS ADD STABILITY. THE FRONT AND REAR FENDER FLARES ACCOMMODATE AVAILABLE 17-INCH, BBS ALLOY WHEELS WITH W-RATED, HIGH PERFORMANCE TIRES.



SUBTLE BUT NOT SEDATE. ALTHOUGH THE WRX SPORT WAGON SHARES MANY OF THE RACE-PROVEN FEATURES OF THE WRX SEDAN, IT OFFERS A STYLE ALL ITS OWN. UNIQUE TO THE WRX SPORT WAGON IS A REAR-GATE SPOILER, REAR WIPER/WASHER AND A CONTOURED FENDER TREATMENT, FRAMING THE STANDARD 16-INCH ALUMINUM-ALLOY WHEELS WITH V-RATED, ALL-SEASON RADIALS. ADDING TO THE FUN, THE WRX SPORT WAGON SHOWN BELOW FEATURES THE AVAILABLE SUBARU ACCESSORY CROSS BARS WITH SKI ATTACHMENTS THAT INTEGRATE PERFECTLY WITH THE STANDARD ROOF RAILS.





A well thought out interior includes a center sun visor above the mirror, a 60/40 split fold-down rear seatback that folds flat for maximum room, and a special space under the luggage floor to store items like an umbrella. Adding to the utility is a multi-box sub-floor storage tray, cargo tie-down hooks, and a cargo area cover to keep prying eyes out.

Impreza WRX Sport Wagon



Impreza WRX Sport Wagon shown in Platinum Silver Metallic

"SUBARU'S NEW IMPREZA WRX IS UNQUESTIONABLY ONE OF THE HOTTEST CARS IN JAPAN THIS YEAR."

AUTOMOBILE MAGAZINE, NOVEMBER 2000

A TRUE PERFORMANCE SPORT WAGON.

Maybe one car can't do everything, but the WRX Sport Wagon comes close. Combine the pure performance of All-Wheel Drive and 227 horsepower with the flexibility of a wagon with impressive cargo storage, and you have a vehicle that can haul in every sense of the word.

Wherever you go, comfort is assured with standard air conditioning, MOMO leather-wrapped steering wheel, power windows, mirrors and door locks, cruise control, remote keyless entry and 6-speaker AM/FM cassette audio system, with an in-dash 6-disc CD changer.



Visibility is key for safety. The rear spoiler of the WRX Sport Wagon not only aids aerodynamics, it helps keep the rear window clear. The standard rear wiper with dual spray washer and the rear window's glass-to-glass design help you see out, and large wraparound taillights help others see you.

"THERE ARE LOTS OF WAYS TO BUILD A CAR, BUT SUBARU'S WAY IS INHERENTLY ONE OF THE BEST."

CAR MAGAZINE, OCTOBER 2000

ACTIVE SAFETY. PASSIVE SAFETY.

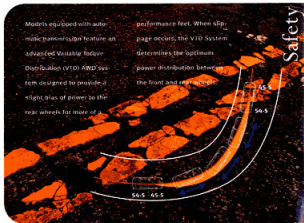


Subaru takes advantage of the boxer engine's short overall height to provide a low hoodline for a clear view of the road ahead. The standard seat height adjuster helps the driver to get a commanding view.

Every Subaru is designed to avoid trouble by giving you superior control in even the worst conditions. Active Safety means going where you want to go and avoiding where you don't. The same features that make the WRX such a rewarding car to drive also make it extremely safe. Standard AWD, responsive handling and 4-channel/4-sensor anti-lock brakes all help you to avoid harm. And that added control translates into a true feeling of confidence when you're behind the wheel. When trouble is unavoidable, an advanced Passive Safety system is there to help protect you.



High performance braking system—By-products of our rally experience are large diameter, fade-resistant 4-wheel disc brakes.



Models equipped with automatic transmission feature an advanced Variable Torque Distribution (VTD) AWD system designed to provide a slight bias of power to the rear wheels for more of a

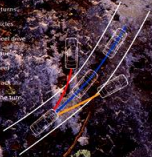
performance feel. When slippage occurs, the VTD System determines the optimum power distribution between the front and rear wheels.

Although rallying is all about going quickly through the worst terrain imaginable, it is also a real world classroom about collisions. Rally cars run into things all the time—rocks, trees, sand dunes—at very high speeds. It gives us a depth of understanding a manufacturer can't get from only watching controlled collisions in some sterile laboratory.

EVERYONE DESERVES SAFETY. THAT'S WHY ALL SEATING POSITIONS FEATURE THREE-POINT SEATBELTS. IN CERTAIN TYPES OF COLLISIONS, PRE-TENSIONERS "CINCH" UP THE FRONT SEATBELTS TO HELP HOLD OCCUPANTS IN PLACE, THEN FORCE LIMITERS GRADUALLY RELEASE BELT TENSION TO REDUCE THE MAXIMUM FORCE ON THE TORSO. REAR CHILD SEAT ANCHORS ARE MOUNTED TO THE FLOOR OF THE VEHICLE, MEETING A NEW INTERNATIONAL STANDARD FOR THE INSTALLATION OF CHILD SAFETY SEATS. THERE'S EVEN AN INTERNAL CHILD SAFETY TRUNK RELEASE WITH A SELF-ILLUMINATING HANDLE ON THE INSIDE REAR OF THE SEDAN TRUNK LID.

High-performance vehicles can easily overpower their drivers whiffling, especially in turns.

Rear-wheel drive vehicles want to subvert front-wheel drive vehicles wanting to dominate straight ahead. All-wheel drive allows you to track confidently through the turn.



Second generation front air bags help cushion occupant deceleration in a collision.*

Dual front and reinforced rear tubular steel side-impact door beams help protect occupants in the event of side collision.



Front seat side-impact air bags are mounted on the front seats, maintaining optimal placement regardless of seating position.*



Ring-Shaped Reinforcement Frames in the front, center and rear of the body structure disperse impact energy around the passenger compartment, offering added protection for occupants. The center ring connects the center pillar with the lateral roof and floor supports for increased side-impact protection. In addition, a specially designed front sub-frame increases energy absorption in offset frontal collisions.

*Seatbelts must be worn at all times. Children should always be properly restrained in the rear seat.

ENGINE

Type	Horizontally opposed DOHC 16-valve high-output 4-cylinder intercooled turbo
Displacement	2.0 liters (122 cubic inches)
Horsepower	227 @ 6000 rpm
Torque (lb.-ft.)	217 @ 4000 rpm
Valvetrain	16-valve with dual overhead camshaft design (DOHC)
Fuel System	Sequential multi-port fuel injection system
Ignition System	Direct ignition system; platinum-tipped spark plugs
Engine Management	ECM Engine Control Module manages fuel injection and ignition systems and features learning, self-diagnosis, limp-home and anti-knock capabilities
Fuel Tank Capacity	15.9 gallons
2002 EPA Mileage Estimates (mpg, city/highway)	20/27 (manual transmission) 19/26 (automatic transmission)

Specifications

DRIVETRAIN

Manual Transmission	5-speed manual with overdrive
Automatic Transmission (Optional)	4-speed electronically controlled automatic with overdrive This transmission has an automatic power mode which engages with rapid use of the accelerator pedal.
All-Wheel Drive (AWD)	Full-time AWD system automatically distributes power between front and rear wheels based on traction needs. Manual transmission models have a viscous-coupling locking center differential. Automatic transmission models have Variable Torque Distribution (VTD). All WRX models have a viscous limited-slip rear differential.

CHASSIS

Body Construction	Unibody construction with front and rear crumple zones and aluminum-alloy hood. 70% of body sheet metal is two-sided galvanized.
Suspension	Fully independent, sport-tuned, with coil springs and struts Front: lower L-arms with liquid-filled rear bushings and stabilizer bar Rear: parallel links and stabilizer bar
Brakes	Power-assisted with dual diagonal hydraulic circuits and 4-channel/4-sensor anti-lock braking system (ABS) Front: 11.4-inch ventilated discs with twin-piston calipers Rear: 10.3-inch discs
Steering	Rack-and-pinion with engine-speed-sensing variable power assist
Turning Circle, Curb-to-Curb	35.4 feet
Wheels	16-inch aluminum-alloy
Tires	205/55R16 89V all-season radials

DIMENSIONS (inches unless otherwise noted)

	Sedan	Sport Wagon
Wheelbase/Length	99.4/173.4	99.4/173.4
Width/Height	68.1/56.7	66.7/58.5
Track: front/rear	58.5/58.3	57.7/57.3
Headroom: front/rear	38.6/36.7	39.7/37.3
Legroom: front/rear	42.9/33.0	42.9/33.7
Shoulder room: front/rear	52.7/52.9	52.7/52.9
Curb Weight (lbs.)		
Manual Transmission	3085	3165
Automatic Transmission	3140	3220
Towing capacity (lbs.)*	2000	2000

Colors & Fabric

ALL OUR RALLY CARS ARE WORLD RALLY BLUE PEARL, BUT LUCKY YOU, YOU GET A CHOICE. ALL WRX MODELS ARE EQUIPPED WITH A HARD-WEARING, FLAT WOVEN SPORT CLOTH, EXCLUSIVELY IN BLACK.

EXTERIOR



Aspen White



Midnight Black Pearl



Platinum Silver Metallic



Sedona Red Pearl



WR Blue Pearl

INTERIOR



Black Flat Woven Cloth

SUCCESS IN RACING DOESN'T ALWAYS MEAN SUCCESS IN THE REAL WORLD, BUT IN OUR CASE IT DOES. SINCE THE ROAD VERSION OF THE WRX WAS INTRODUCED IN 1992, IT'S WON SOME IMPRESSIVE AWARDS. IN JUNE 1998, THE IMPREZA TURBO PLACED FIRST IN *AUTOCAR*'S TOP 100 CARS IN BRITAIN COMPETITION. *CAR* MAGAZINE CALLED IT THE CAR OF THE DECADE IN DECEMBER 1999. AND *EVO* MAGAZINE CALLED IT ONE OF THE 10 GREATEST DRIVER'S CARS OF THE CENTURY IN NOVEMBER 1999. IN NOVEMBER 2000, THE IMPREZA WON *WHEELS* MAGAZINE'S CAR OF THE YEAR AWARD AND JAPAN'S 2000-2001 CAR OF THE YEAR SPECIAL AWARD.

Accolades

INTERIOR FEATURES (@night)

Audio	AM/FM stereo with logic control cassette, in-dash 6-disc CD changer and six speakers
Convenience	Remote keyless entry; dual visor vanity mirrors, map lights; cruise control; driver's seat height adjustment; two cup holders
Comfort	MOMO® steering wheel; WRX-embroidered floor mats; sport-design bucket seats; air conditioning; rear seat heater ducts

EXTERIOR FEATURES (@night)

Performance	Aluminum-alloy hood, functional hood scoop, aerodynamic side ground effects molding, dual-outlet sport tailpipe
Safety	Multi-reflector halogen fog lights, variable intermittent windshield wipers and rear wiper with dual-spray washer (WRX Wagon)

Features

SAFETY FEATURES

	Sedan	Sport Wagon
Meets all federal passenger car safety standards	S	S
All-Wheel Drive (AWD)	S	S
Viscous limited-slip rear differential	S	S
4-channel/4-sensor anti-lock braking system (ABS)	S	S
Dual front air bags (SRS)**	S	S
Front seat side-impact air bags (SRS)**	S	S
Height-adjustable 3-point front seatbelts with pre-tensioners and force limiters	S	S
3-point rear seatbelts for all three seating positions	S	S
Uniform child safety seat anchorage system	S	S
Energy absorbing front and rear crumple zones	S	S
Side-impact door beams	S	S
Child safety rear door locks	S	S
Internal child safety trunk release	S	-

Warranties[†]

Basic Warranty	3 years or 36,000 miles, whichever comes first
Powertrain Warranty	5 years or 60,000 miles, whichever comes first
Rust Perforation Warranty	5 years, unlimited mileage

- * See Owner's Manual for detailed instructions you should follow when towing a trailer.
- ** The Supplemental Restraint System (SRS) (air bags) affords the driver and front passenger additional protection in a moderate to severe frontal or (when equipped with front seat side-impact air bags) a side-impact collision. This system provides supplemental protection only, and seatbelts must be worn in order to avoid injuries to out-of-position occupants upon bag deployment and to provide the best combined protection in a serious accident. Children should always be properly restrained in the rear seat.

† For complete warranty information, including coverage and exclusions, see your Subaru dealer.

Specifications in this brochure are based on the latest product information available at the time of publication. Some equipment shown in photography in this brochure is optional at extra cost. Specific options may be available only in combination with other options. Specific combinations of equipment or features may vary from time to time and by geographic area. Certain accessories and equipment may not be available at the time of publication. Subaru of America, Inc. reserves the right to change or discontinue at any time, without notice, prices, colors, materials, equipment, accessories, specifications, models and packages. Colors shown may vary due to reproduction and printing processes. For more information, contact your Subaru dealer. Subaru, Impreza, WRX, MOMO, BBS, and "The Beauty of All-Wheel Drive." are registered trademarks.

S = Standard / - = Not Available

WE'VE SPENT MORE THAN 25 YEARS PERFECTING THE SUBARU

ALL-WHEEL DRIVING SYSTEM — AN INTEGRAL PART OF EVERY

SUBARU. OUR PHILOSOPHY OF UNDETERRED DEDICATION

IS SHARED BY SUBARU DRIVERS. SUBARU DRIVERS UNDER-

STAND THAT THE BEAUTY OF ALL-WHEEL DRIVING EXTENDS

WAY BEYOND THE  SNOWY MOUNTAIN

PASS AND THE RAIN-SLICKED HIGHWAY. IT MEANS HAVING A

SAFER, MORE COMFORTABLE RIDE UNDER ANY ROAD CONDITION,

EVERY TIME YOU GET BEHIND THE WHEEL. AND WE DON'T

THINK THAT'S TOO MUCH TO ASK. LEARN MORE ABOUT SUBARU

ON THE WEB @ WWW.SUBARU.COM OR CALL 1.800.SUBARU-3.

Subaru is proud to be associated with the American Canoe Association, the National Ski Patrol and Professional Ski Instructors of America, The Cross Country Skiing 'Factory Team', the American Association of Snowboard Instructors, as well as the International Mountain Bicycling Association, the Masters Rowing Association, the Dagger Canoe and Kayak Company, Executive Women's Golf Association, Leave No Trace and L.L.Bean.



L.L.Bean

The Subaru Roadside Assistance Program covers all 2002 Subaru vehicles during the first three years or 36,000 miles, whichever comes first. By calling the toll-free number in the Owner's Information Kit, Subaru owners can take advantage of any of the following benefits:

- 24-hour Roadside Assistance, seven days a week, 365 days a year all throughout the United States.
- Emergency Towing Service to the nearest authorized Subaru dealer.
- Emergency Roadside Assistance for jump starts, gasoline (up to two gallons), flat tire change, emergency lockout service (lost key or key is locked in the vehicle) and emergency fluid replacement.

See your Subaru dealer for details.

Subaru supports the U.S. Forest Service's "Tread Lightly" organization and urges you to go easy on the environment when you go off-highway.

tread lightly

©2000 Subaru of America, Inc. MSA RM0201
This brochure has been printed in the U.S.A. on recycled paper.